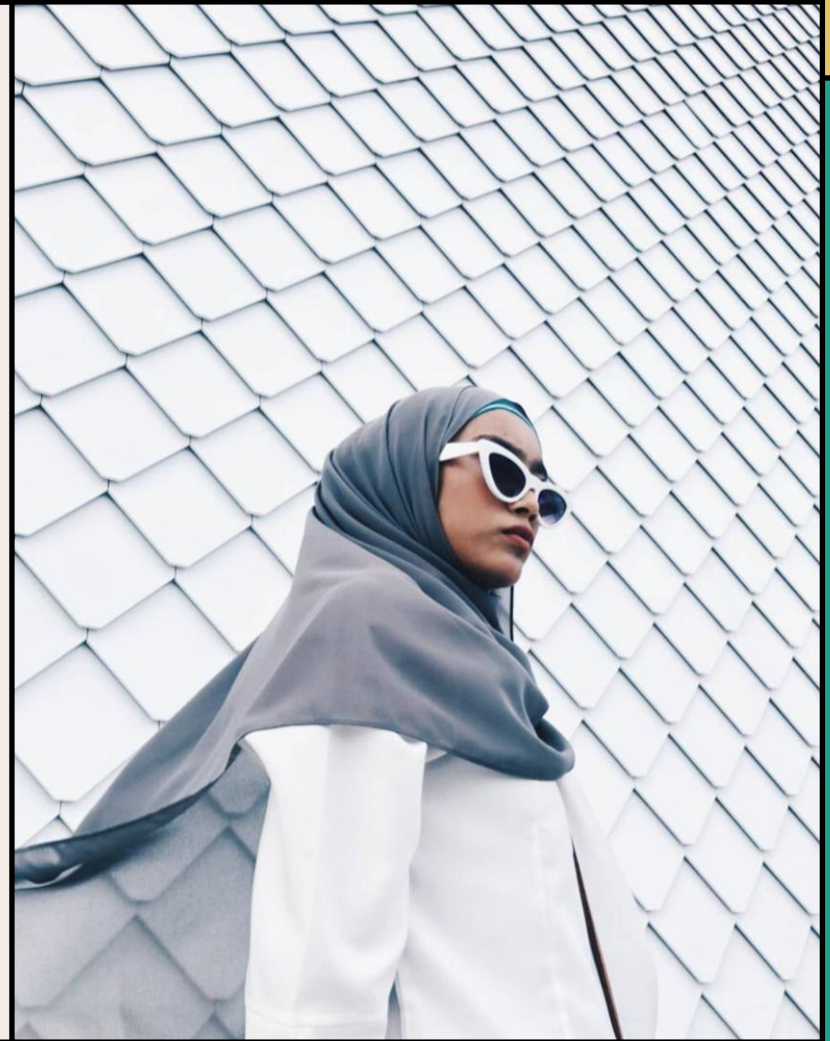


Inspiring Women's Inclusion to Empower Water for Peace

“Think Globally, Act Locally to realize Water for Peace by Inspiring Women's Inclusion.”

SOE TINT

Marine Ecology & Maritime Trades Ecosystems



□ TRADITIONAL BELIEFS ON WOMEN

#1. In Patriarchal Societies/ Communities – social role of men is superior while the role of women is considered secondary.

#2. Men are always Head of the Family.

#3. Female roles are not much differences from the age of hunters and gatherers.

#4. Women take care for children, cooking, house-keeping.

#5. Women are restricted from social rights and academic opportunities.

#6. Generally considered women are insufficient leaders.





□ History of Water-related Conflicts (and Wars)

- Siddhartha Gautama eased the tension between Sakyas of Kapilvastu and the Koliyas of Ramagan, sparked from the Rohini River water dispute.
- Ganges and Brahmaputra Basin – Nepal, India and Bangladesh

➤ Euphrates and Tigris Rivers disputes – Turkey, Syria and Iraq.

➤ Jordan River Conflicts – Israel, Lebanon, Jordan and the State of Palestine

➤ In Africa, River Nile related conflicts – Egypt, Ethiopia and Sudan

➤ In Central Asia, Aral Sea conflicts – among Kazakhstan, Uzbekistan, Turkmenistan, Tajikistan and Kyrgyzstan

➤ Indus River dispute – India and Pakistan

➤ Helmand River conflicts – Iran and Afghanistan





□ GAP Analysis –

➤ Main causes of dispute and conflicts into war.

#1. Supplies and Demands, Needs and Greed.

#2. Ideological Differences rather than a conflict of economic interests.

➤ S.W.O.T within same gender, own organisation.

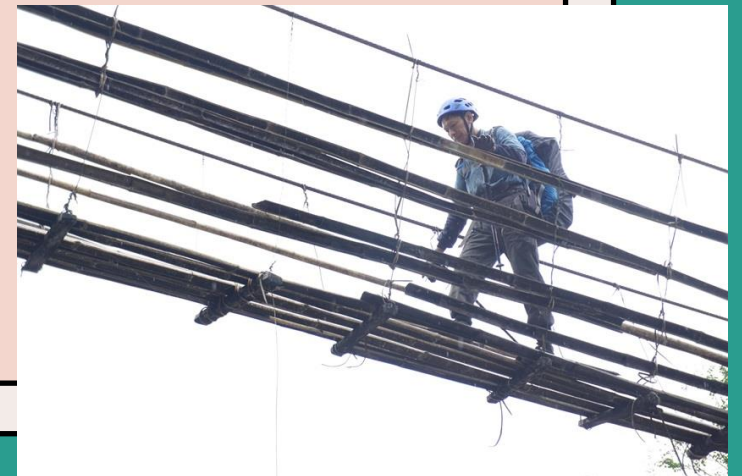
#3 Awareness talks, capacity building courses, skill upgrading workshops.

➤ P.E.S.T.L.E for countries, regions and civilisations

#4. Transboundary River issues, Riparian States issues

#5. Landlock regions to coastal area trading routes

#6. Continental Shelves and Exclusive Economic Zone (EEZ) issues





☐ WATER

❖ Earth covers 70% by water (blue areas).

❖ Freshwater contain less than 1% or less than 0.05% depend on the criteria. It's about 2.7% of total water.

❖ Water neither acid nor base, more salt dissolve in water >> more basic.

❖ Human body contains 60% to 70% of water.

➤ F.W Banks: Glaciers and Ice caps hold 68.7% of fresh water on Earth.

➤ Ground Water constitutes 30.1%.

➤ Only 1.2% is accessible surface freshwater.



❖ 97.3% composed with Saltwater.

- Brackish water is more than 1% and less than 3% salt content
- Seawater have more than 3% salt.

✓ Saltwater carries heat around the Earth.

✓ It takes Carbon Dioxide out of the air.

✓ Oceans and Seas provides almost half of the Oxygen.

✓ Saltwater Ecosystems support 50% of all species.

✓ The Pacific Ocean contains 49.6% of all saltwater on our Planet

■ Brackish water is where freshwater and saltwater meet.

❑ Riding the Powerful Waves of the Tides—

- 1904 Berlin, Germany – Universal Female Suffrage Movement
- 1911 International Women’s Day
- March 8, 1977, International Women Day became global holiday.
- Dec 18, 1979, Convention on the Elimination of All Forms of Discriminations against Women. (Myanmar ratified CEDAW) in 1997)
- Feb 11, 2015, International Day for Women and Girls in Science, Technologies, Engineering and Mathematics (STEM)
- Women’s International Shipping & Trading Association. (WISTA)
- World Maritime Day Theme 2019: Empowering Women in te Maritime Community



☐ SMART Master Plan for the Stakeholders (Strategic Plan)

- **S**pecific (significant, stretching)
- **M**easurable (meaningful, motivated)
- **A**ttainable (acceptable, agreed-upon, achievable, action-oriented.)
- **R**elevant (reasonable, realistic, rewarding, result-oriented.)
- **T**ime-bound (time-based targets, tangible milestones, traceable.)



- ❖ Top Level commitment
- ❖ Goal Setting (short term), Quality Standards, Requirements and Guidelines
- ❖ Monitoring and Guidance
- ❖ Periodical Inspections, Annual Audits and Evaluation
- ❖ Opportunities for Improvement



Women in Water for Peace



Diana Iskreve
President Elec of WfWP



Dr. Alice Bouman-Dentener
V.P WRTC International



Rachel Carson
Marine biologist, writer, and
conservationist



Erin Brockovich
Environmental Activist

Women in Water for Peace



Dr, Jane Goodall
Founder, Jane Goodall Institute



Dr. Silvia Earl
Explorer, President MISSION BLUE



Grace Fu
Minister, Ministry of Sustainability &
Environment



Cate Lamb
Global Director of Water Security

Women in Water for Peace



Anna Ivanovna Shchetinina
World's First Female Captain



Dr. Khin Ni Ni Thein
Ecocivilisation Myanmar Country
Chair



Dr. Karenne Tun
Director Coastal and Marine



Michelle J. Howard
U.S First Female 4 Star Admiral

Thanks for your time and attention.



Summary

Craziness အရူးအမူး ဖြစ်မြောက်ချင် တဲ့ Passionate ပြင်:
ပြတဲ့ဆန္ဒ ရှိဖို့ လိုပါတယ်။

Consistence တစိုက်မတ်မတ် တသွေမတိမ်း လုပ်သွားပါ။

Resilience ခံနိုင်ရည် - လဲကျလည်း ပြန်ထ ဆက်လျှောက်မယ်
ဆိုတဲ့ ပစ်တိုင်းထောင် Tumbling Kelly စိတ်ဓါတ်မျိုး ရှိမယ်
ဆိုရင်
အောင်မြင်ပါလိမ့်မယ်။